
Specification of the germ line*

Susan Strome[§], Department of Biology, Indiana University, Bloomington, IN 47405-3700 USA

Table of Contents

1. Overview	1
2. <i>pie-1</i> and transcriptional repression	2
3. The MES proteins and regulation of chromatin	3
4. P granules and regulation of RNA	5
5. <i>mep-1</i> and avoiding germline specification	7
6. Summary and future directions	7
7. References	8

Abstract

In *C. elegans*, the germ line is set apart from the soma early in embryogenesis. Several important themes have emerged in specifying and guiding the development of the nascent germ line. At early stages, the germline blastomeres are maintained in a transcriptionally silent state by the transcriptional repressor **PIE-1**. When this silencing is lifted, it is postulated that correct patterns of germline gene expression are controlled, at least in part, by MES-mediated regulation of chromatin state. Accompanying transcriptional regulation by **PIE-1** and the MES proteins, RNA metabolism in germ cells is likely to be regulated by perinuclear RNA-rich cytoplasmic granules, termed P granules. This chapter discusses the molecular nature and possible roles of these various germline regulators, and describes a recently discovered mechanism to protect somatic cells from following a germline fate.

1. Overview

The germ line is set apart from the soma by the 16-24-cell stage of embryogenesis (see [Asymmetric cell division and axis formation in the embryo](#)). During early development of the embryo (Figure 1), through a series of asymmetric partitioning events and cell divisions, the germline blastomeres (P_0, P_1, P_2, P_3, P_4) inherit two unique regulatory systems: cytoplasmic RNA-rich organelles called P granules, and transcriptional repression mediated by **PIE-1**. In addition, a chromatin-regulation system involving four MES proteins, although not partitioned specifically to the germline blastomeres, is crucial for their subsequent development. This chapter discusses the molecular nature and likely roles of P granules, **PIE-1**, and the MES proteins in germline specification, and the proposed role of **MEP-1** in antagonizing germline fate in somatic cells.

*Edited by Judith Kimble. Last revised July 8, 2005. Published July 28, 2005. This chapter should be cited as: Strome, S. Specification of the germ line (July 28, 2005), *WormBook*, ed. The *C. elegans* Research Community, WormBook, doi/10.1895/wormbook.1.9.1, <http://www.wormbook.org>.

Copyright: © 2005 Susan Strome. This is an open-access article distributed under the terms of the Creative Commons Attribution License, which permits unrestricted use, distribution, and reproduction in any medium, provided the original author and source are credited.

[§]To whom correspondence should be addressed. E-mail: sstrome@bio.indiana.edu

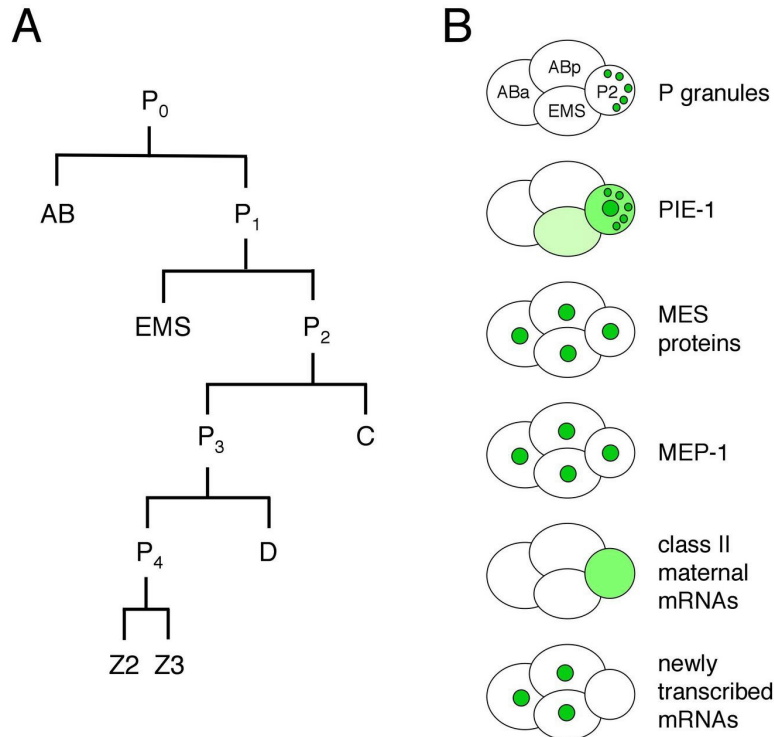


Figure 1. The early embryonic lineage and summary of the distributions of various factors in 4-cell embryos. (A) Unequal divisions of the germline blastomeres, P_0 , P_1 , P_2 , and P_3 generate the somatic blastomeres AB, EMS, C, and D and the primordial germ cell P_4 . P_4 divides equally into Z2 and Z3 at the ~100-cell stage. (B) The cartoons of 4-cell embryos illustrate that P granules are partitioned to the germline blastomeres, PIE-1 resides in the germline cytoplasm and nucleus and also associates with P granules, the MES proteins and MEP-1 are in the nuclei of all cells in early embryos, class II maternal mRNAs persist in the germline blastomeres and are degraded in the somatic blastomeres, and new transcription turns on in the somatic blastomeres and not in the germline blastomeres.

2. *pie-1* and transcriptional repression

The *pie-1* gene was identified in a screen for maternal-effect mutant embryos that produce too many pharyngeal and intestinal cells, hence the name pie for "pharynx and intestine excess" (Mello et al., 1992). The excess of specific somatic cell types in mutant embryos is due to transformation of the P_2 germline blastomere into a somatic blastomere like its sister EMS (Mello et al., 1992). Thus, *pie-1* is required for P_2 to follow a germline fate instead of a somatic fate. PIE-1 is a CCCH-type zinc finger protein with a dynamic localization pattern in the early embryo (Mello et al., 1996; Figure 1). PIE-1 accumulates in the oocyte and 1-cell embryo and during each of the initial four divisions becomes enriched in the germline daughter (Figure 2B), by at least two mechanisms: pre-division enrichment in the cytoplasm destined for the germline daughter cell, and post-division degradation in the cytoplasm of the somatic daughter cell (Reese et al., 2000; DeRenzo et al., 2003; see *Asymmetric cell division and axis formation in the embryo*). The latter is accomplished by an elongin C/CUL-2 E3 ubiquitin ligase, which is targeted to *pie-1* by a bridging protein (ZIF-1) that interacts with both the E3 ligase complex and PIE-1's first zinc finger (DeRenzo et al., 2003). The association of some PIE-1 with P granules (Figure 2B and see below) and centrosomes is not required for its segregation to the germline blastomeres (Reese et al., 2000). Thus, PIE-1 is maternally provided, becomes enriched in each germline blastomere, and is required to maintain germline fate.

Within each germline blastomere, PIE-1 becomes concentrated in the nucleus (Figure 1 and Figure 2), where it functions as a transcriptional repressor. The initial clues for this repressor function came from three observations (Seydoux et al., 1996): 1) In early wild-type embryos, newly transcribed RNAs are detected in the somatic blastomeres but not in the germline blastomeres (Figure 2A). 2) In *pie-1* mutant embryos, newly transcribed RNAs are additionally detected in the germline blastomeres. 3) Driving ectopic *pie-1* expression in somatic cells represses embryonic transcription. The mechanism of transcriptional repression has been elegantly dissected (Seydoux and Dunn, 1997; Batchelder et al., 1999; Zhang et al., 2003). Unexpectedly, instead of inhibiting transcriptional initiation, *pie-1* appears to function at the level of transcriptional elongation. The process of elongation requires phosphorylation by CDK9 (associated with cyclin T in the P-TEFb complex) of a repeated heptapeptide in the carboxy-terminal domain (CTD) of RNA polymerase II. In transfected mammalian cells, *pie-1* inhibits CDK9,

through a *pie-1* sequence that is very similar to the repeated heptapeptide sequence in the RNA pol CTD and that apparently competes for CDK9 (Zhang et al., 2003). Thus, the current view is that *pie-1* protects germline fate by blocking transcriptional elongation and preventing expression in the germline blastomeres of genes that promote somatic differentiation.

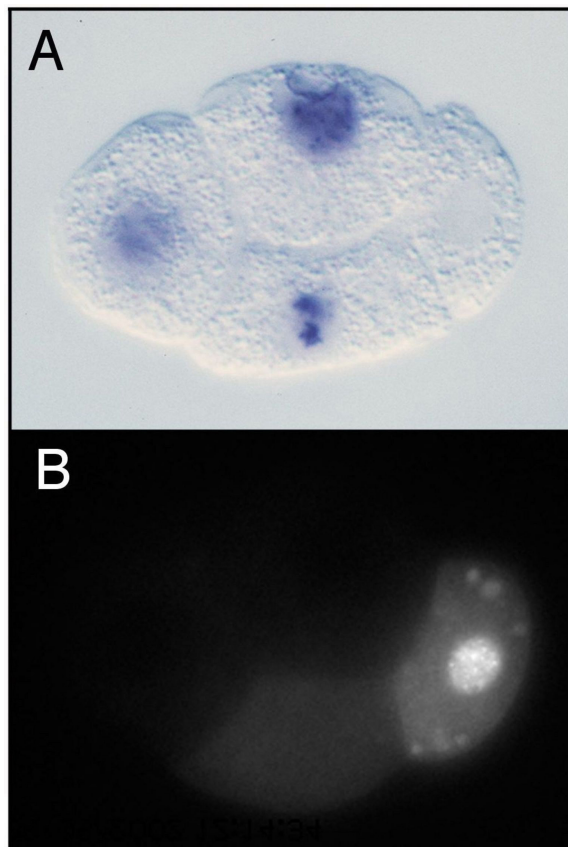


Figure 2. Distributions of embryonically transcribed RNA and PIE-1 in 4-cell embryos. (A) *pes-10* transcripts are detected in ABa, ABp, and EMS (cells on the left), but not in P₂ (on the right). (B) PIE-1 accumulates primarily in P₂, where it is concentrated in the nucleus and in P granules. Images provided by Geraldine Seydoux.

The *pie-1* story highlights two key features of early germline specification: segregation of maternally provided factors to the germline blastomeres, and protection of the germline blastomeres from somatic differentiation signals. *pie-1* gene products are maternally provided to the 1-cell embryo along with numerous gene products that encode somatic differentiation cues (e.g., *skn-1* mRNA). PIE-1 protein is specifically partitioned to the germline blastomeres (Figure 1 and Figure 2B), while various somatic differentiation factors are delivered to various subsets of blastomeres. SKN-1 illustrates the germline challenge. SKN-1 is a transcription factor that functions in EMS to turn on genes required for E and MS somatic cell fates, but SKN-1 is present in both EMS and its germline sister P₂ (Bowerman et al., 1992; Bowerman et al., 1993; see E cell specification). One job of *pie-1* is to prevent expression of SKN-1 target genes in P₂ (and presumably prevent expression of other somatic differentiation genes in P₃ and P₄; Mello et al., 1992), and thereby protect germline fate. PIE-1 levels drop shortly after the primordial germ cell P₄ divides into Z2 and Z3 at the ~100-cell stage (Mello et al., 1996). Lifting of *pie-1* repression presumably sets the stage for turn-on of expression in the nascent germ line of genes appropriate for germline development.

3. The MES proteins and regulation of chromatin

The *mes* genes were discovered in screens for maternal-effect sterile or "grandchildless" mutants (Capowski et al., 1991). Such genes define factors that are maternally supplied and that function in development of the germ line in offspring. Indeed, *mes/mes* mothers produce healthy-looking hermaphrodite offspring whose germ line degenerates midway through larval development (Capowski et al., 1991; Paulsen et al., 1995). Interestingly, male

offspring usually have a healthy germ line and are fertile (Garvin et al., 1998; see below). The emerging model is that the MES system helps specify the chromatin organization that the nascent germ line (i.e. Z2 and Z3) inherits and that participates in specifying patterns of gene expression once *pie-1* repression is lifted.

Although the four *mes* genes have similar mutant phenotypes, they appear to function in two distinct complexes. MES-2, MES-3, and MES-6 are in a complex that resembles the Enhancer of zeste [E(z)] complex in insects and vertebrates (Xu et al., 2001a). Like E(z), MES-2 has a SET domain, which functions in methylating histone tails (Holdeman et al., 1998; Bender et al., 2004). Both E(z) and MES-2, in their respective complexes, methylate Lys27 of histone H3 (Bender et al., 2004; Cao and Zhang, 2004). Trimethylated H3-Lys27 (abbreviated H3K27me3) is a "repressive" chromatin mark - it causes chromatin to be organized into a silenced state (Cao and Zhang, 2004). MES-4 is not in the MES-2/3/6 complex (Xu et al., 2001a) and likely functions with a unique set of partners that have not yet been identified. MES-4 also has a SET domain (Fong et al., 2002) and so, like MES-2, is predicted to methylate histone tails.

The distributions of the MES proteins figure prominently in modeling their probable functions. MES-4 associates with chromatin and shows a striking pattern in the germ line and in early embryos (Figure 3B): it binds in a banded pattern along the lengths of the 5 autosomes and is excluded from the X chromosomes (except the leftmost tip; Fong et al., 2002; Carroll and Strome, unpublished). That distribution is controlled by the MES-2/3/6 complex, as MES-4 binds along the length of the X chromosomes in *mes-2*, *mes-3*, or *mes-6* mutants (Fong et al., 2002; Carroll and Strome, unpublished). MES-2, MES-3, and MES-6 are concentrated in the nucleoplasm but not significantly on chromatin (Figure 3A; Holdeman et al., 1998; Korf et al., 1998; Xu et al., 2001b). Consequently, the binding specificity of the MES-2/3/6 complex is inferred largely from the distribution of the chromatin mark (H3K27me) that is made by the complex. H3K27me3 is concentrated on the X chromosomes and in addition lightly distributed in a banded pattern along the autosomes (Bender et al., 2004). An appealing scenario is that MES-4 and MES-2/3/6 bind to mutually exclusive chromatin domains and differentially modify histone tails in those domains: the MES-2/3/6 complex creates domains of repressed chromatin, while MES-4 may create domains of active or potentially activatable chromatin. Another possibility for MES-4 is that its main role is to exclude MES-2/3/6 or other repressors from autosomal regions and thereby focus repressor action on the X chromosomes (Fong et al., 2002).

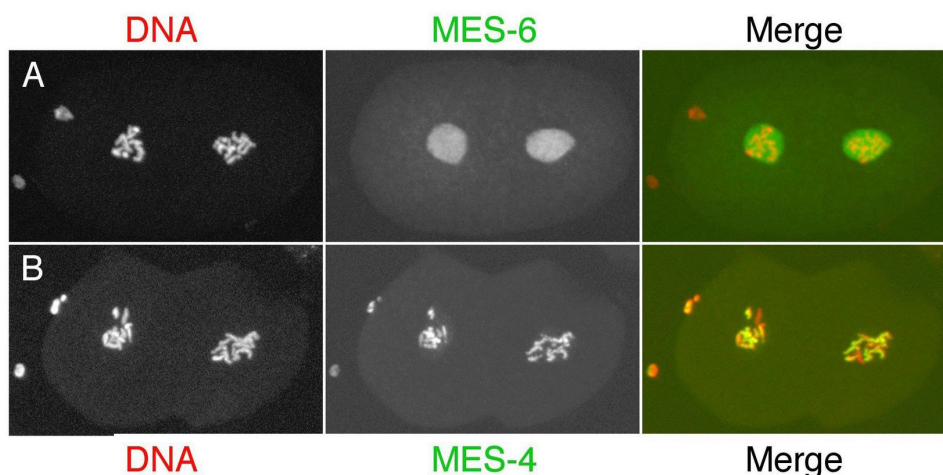


Figure 3. Distributions of the MES proteins in 2-cell embryos. (A) MES-6 (and MES-2 and MES-3, not shown) are dispersed in the nucleoplasm in both AB (cell on the left) and P₁ (on the right). (B) MES-4 is associated with chromatin and concentrated on the autosomes in the nuclei of both cells. Images provided by Laurel Bender.

Based on the above and additional information, the working model is that the MES system operates in the maternal germ line and during early embryogenesis (Xu et al., 2001b) to epigenetically mark chromatin domains (or individual genes) and in that way regulate patterns of gene expression in Z2 and Z3 and their descendants. Genes to be kept in a silent state when *pie-1* repression is lifted and transcription commences in Z2 and Z3 are marked by MES-2/3/6 with H3K27me3. As discussed in Germline chromatin and Germline genomics, both X chromosomes in hermaphrodites and the single X in males are maintained in a silent state throughout most of germline development. The concentration of the repressive H3K27me3 mark on the Xs is consistent with MES-2/3/6 participating in silencing. As further support, the X chromosomes acquire marks of active chromatin in hermaphrodite offspring of *mes-2*, *mes-3*, and *mes-6* mothers (Fong et al., 2002). The prediction is that X-linked genes are desilenced in those

animals. The two models for *MES-4* function, marking genes to be expressed or alternatively participating indirectly in X-chromosome silencing, make different predictions about gene expression patterns in the nascent germ line of *mes-4* mutants. Those predictions are currently being tested.

The nascent germ line in males does not absolutely require the MES system (Garvin et al., 1998). This suggests that an alternative system mediates X-chromosome silencing in males (see [Germline chromatin](#)) and challenges the view that the MES system serves an important role in regulating expression of autosomal genes in the germ line. Interestingly, in the soma of males, *mes-2*, *mes-3*, and *mes-6* are known to participate in repressing gene expression from the autosomal Hox gene cluster (Ross and Zarkower, 2003).

4. P granules and regulation of RNA

RNA-rich cytoplasmic "germ granules" are a common feature of germ cells across species and have been invoked for decades as germline "determinants" (reviewed in Saffman and Lasko, 1999). At least some of the proteins associated with the worm versions of these granules, called P granules, are indeed required for germline development (e.g., Kawasaki et al., 1998; Kuznicki et al., 2000). The questions that have dominated P-granule investigations are: how are P granules segregated to the germline blastomeres during early embryogenesis, what are they made of, and what roles do they serve during germline development?

P granules are maternally loaded into the oocyte and progressively partitioned to P_1 , P_2 , P_3 , and finally P_4 (Figure 1) by a combination of mechanisms (Hird et al., 1996; Cheeks et al., 2004; see [Asymmetric cell division and axis formation in the embryo](#)): 1) posterior movement with bulk cytoplasmic flow, 2) hitching a ride on the nucleus to the future germline side of the cell, and 3) destabilization of granules left behind in the somatic daughter's cytoplasm. These mechanisms accomplish segregation of the majority of detectable granules to P_4 . Once delivered to P_4 , P granules become localized primarily around the outside of the nuclear envelope, and that is their primary residence throughout the rest of germline development. When considering what roles P granules are likely to serve, two possibilities seem likely: segregating P granules to each P blastomere serves to deliver maternal proteins and RNAs to the nascent germ line, and once there, nucleus-associated P granules regulate new transcripts as they exit the nucleus (see below).

P granules contain RNA and numerous proteins, all of which are predicted to bind RNA and several of which have been implicated in translational control (see [RNA-binding proteins](#) and [RNA regulation in the germline](#)). As shown in Table 1, protein components include members of the PGL (RGG motif) family, members of the VASA-related GLH (DEAD box helicase motif) family, the predicted RNA helicase CGH-1, a cap-binding translation initiation factor IFE-1, Sm proteins (best known for their role in RNA splicing), PIE-1 (Figure 2B and see above) and other CCCH finger proteins (MEX-1, POS-1, OMA-1, and OMA-2), the KH-domain proteins MEX-3 and GLD-1, and the GLD-2/GLD-3 poly(A) polymerase. The only components known to be in granules at all stages are the PGL and GLH proteins (Kawasaki et al., 1998; Kawasaki et al., 2004; Gruidl et al., 1996; Kuznicki et al., 2000), leading to the hypothesis that they are important for assembly/stability of P granules. Indeed, molecular epistasis studies suggest a P-granule assembly pathway in which GLH-1 accumulation in granules is necessary for efficient recruitment or retention of the PGL proteins (Kawasaki et al., 1998; Kawasaki et al., 2004; Kuznicki et al., 2000). Interestingly, no one protein has been identified whose loss results in a total absence of P granules.

The list of RNA components of P granules includes *nos-2*, *pos-1*, *mex-1*, *mex-3*, *skn-1*, and *gld-1* (Subramaniam and Seydoux, 1999; Schisa et al., 2001). Basically, all of the six developmentally regulated maternal mRNAs tested showed an accumulation in P granules, while structural RNAs (5S, 5.8S, 18S, and 26S) and abundant housekeeping mRNAs (actin and β -tubulin) did not (Schisa et al., 2001). Most of these studies were done in adult germ lines, where P granules are perinuclear and in fact associated with clusters of nuclear pores (Pitt et al., 2000). Even P granules dissociated from the nuclear envelope contain nuclear-pore proteins and pore-like structures (Pitt et al., 2000). Thus, a reasonable scenario is that many or most developmentally regulated maternal mRNAs pass through and are transiently retained in P granules as they exit from nuclei. An additional scenario is that P granules participate in delivering and then stabilizing certain maternal mRNAs in the germline cells of embryos. Indeed, the P-granule-associated mRNAs listed above all belong to the class of messengers that are selectively retained in the germline blastomeres and degraded in the somatic blastomeres (Seydoux and Fire, 1994; see [Translational control of maternal RNAs](#)).

Table 1. Proteins present in P granules

Proteins	Motifs/Functions	Associated with P granules in:		References
		Embryos	Adults	
PGL-1	RGG box	Yes	Yes	Kawasaki et al., 1998
PGL-2	No recognizable motifs	No	Yes	Kawasaki et al., 2004
PGL-3	RGG box	Yes	Yes	Kawasaki et al., 2004
GLH-1	DEAD-box helicase motifs, 4 CCHC fingers	Yes	Yes	Gruidl et al., 1996
GLH-2	DEAD-box helicase motifs, 6 CCHC fingers	Yes	Yes	Gruidl et al., 1996
GLH-3	DEAD-box helicase motifs, 2 CCHC fingers	Yes	Yes	Kuznicki et al., 2000
GLH-4	DEAD-box helicase motifs, 5 CCHC fingers	Yes	Yes	Kuznicki et al., 2000
CGH-1	DEAD-box helicase motifs	Yes	Yes	Navarro et al., 2001
PIE-1	2 CCCH fingers	Yes	No	Mello et al., 1996; Reese et al., 2000
MEX-1	2 CCCH fingers	Yes	Yes ^a	Guedes and Priess, 1997; Schisa et al., 2001
POS-1	2 CCCH fingers	Yes	Yes ^a	Tabara et al., 1999; Schisa et al., 2001
OMA-1 ^b	2 CCCH fingers	Yes	Yes ^a	Shimada et al., 2002; Lin, 2003
OMA-2 ^b	2 CCCH fingers	Yes	Yes ^a	Shimada et al., 2002
MEX-3	2 KH domains	Yes	Yes ^a	Draper et al., 1996; Schisa et al., 2001
GLD-1	KH domain; translational repressor	Yes	No	Jones et al., 1996
GLD-2	Cytoplasmic poly(A) polymerase (PAP)	Yes	No	Wang et al., 2002
GLD-3	KH-related domains; subunit of PAP	Yes	Moderate	Eckmann et al., 2002
Sm proteins	Splicing factors	Yes	Yes	Barbee et al., 2002
SPN-4	RNP motif	Yes	Unknown	Ogura et al., 2003
IFE-1	Translation initiation factor 4E	Unknown ^c	Unknown ^c	Amiri et al., 2001

^ain oocytes^bOMA-1 and OMA-2 were called MOE-1 and MOE-2, respectively, by Shimada et al., 2002^cGFP-tagged IFE-1, driven by the *pie-1* promoter, associates with P granules in embryos.

It is likely that P granules serve diverse functions at different times of development. Most relevant to a discussion of germline specification is what roles maternally contributed P granules serve in the nascent germ line. Mutants lacking multiple PGL proteins offer some insights. The offspring from homozygous *pgl-1*; *pgl-3* double mutant mothers show severe defects in germline proliferation and gametogenesis and develop into sterile adults (Kawasaki et al., 2004; see *Germline proliferation and its control*). *pgl-1* single mutants show similar defects, but only at elevated temperature (Kawasaki et al., 1998), suggesting that PGL-1 is required to maintain P-granule integrity and function at elevated temperature, but that PGL-3 can serve this role at low temperature. A similar situation appears to hold for GLH-1 and GLH-4 (Kuznicki et al., 2000). We still do not understand the molecular causes of the germline proliferation or gametogenesis defects observed in *pgl* and *glh* mutants. Important directions for future analysis are figuring out the roles of various P-granule proteins, when and how various RNA components of P granules are regulated by their granule association, and how such regulation impacts germline events.

5. *mep-1* and avoiding germline specification

Germline blastomeres are thought to be protected from following a somatic fate at least in part by *pie-1*-mediated transcriptional repression, as discussed above. Recent studies suggest that the converse, somatic cells being protected from following a germline fate, may also occur. Members of the synMuv B class of chromatin regulators appear to play a crucial role, which was discovered through analysis of the *mep-1* gene. In *mep-1* mutant embryos, somatic cells display germline traits (e.g., activate *pgl-1* and other P-granule genes) as well as somatic traits; mutants arrest as young larvae (Unhavaithaya et al., 2002; Belfiore et al., 2002). Surprisingly, loss of *mes* gene function suppresses the *mep-1* "ectopic P granules" and larval-arrest phenotypes; many *mep-1*; *mes* double mutants develop into viable albeit sterile adults (Unhavaithaya et al., 2002). MEP-1 is in a complex with LET-418 and HDA-1, two subunits of the nucleosome remodeling and histone deacetylase (NuRD) complex (see Germline chromatin). Intriguingly, PIE-1 appears to regulate the MEP-1/LET-418/HDA-1 complex. In transfected vertebrate cells, PIE-1 interacts directly with MEP-1 and, perhaps through that interaction, inhibits the histone deacetylase activity of HDA-1. Furthermore, ectopic expression of *pie-1* in *C. elegans* somatic cells mimics the *mep-1* mutant phenotype and causes larval arrest and ectopic expression of at least one P-granule protein (Unhavaithaya et al., 2002).

A model that may explain the genetic interactions of MEP-1, PIE-1, and the MES proteins is shown in Figure 4 (Unhavaithaya et al., 2002; Shin and Mello, 2003). The MES proteins establish and maintain a particular "germline state" of chromatin that is required for germline patterns of gene expression. All cells of the early embryo inherit that germline chromatin state from the oocyte and sperm (Figure 1). In somatic cells, the MEP-1 complex remodels that chromatin organization, to allow somatic patterns of gene expression and appropriate somatic differentiation. In the germline blastomeres, PIE-1 antagonizes the MEP-1 complex, to protect the germline state of chromatin. According to this model, loss of *mep-1* would cause the germline chromatin state to persist in somatic cells, leading to defective somatic development. Concomitant loss of the MES's would eliminate the germline chromatin state and make MEP-1 dispensable in somatic cells, restoring somatic development. Loss of *pie-1* would allow MEP-1 to remodel the germline chromatin state to a somatic state in the germline cells, leading to defective germline development. Tests of this model will reveal whether MEP-1 in the soma selectively represses germline fate or more generally regulates gene expression patterns, and whether PIE-1 inhibits the MEP-1 complex in *C. elegans* embryos. Another area for investigation is the essential role of *mep-1* during later germline development (Belfiore et al., 2002).

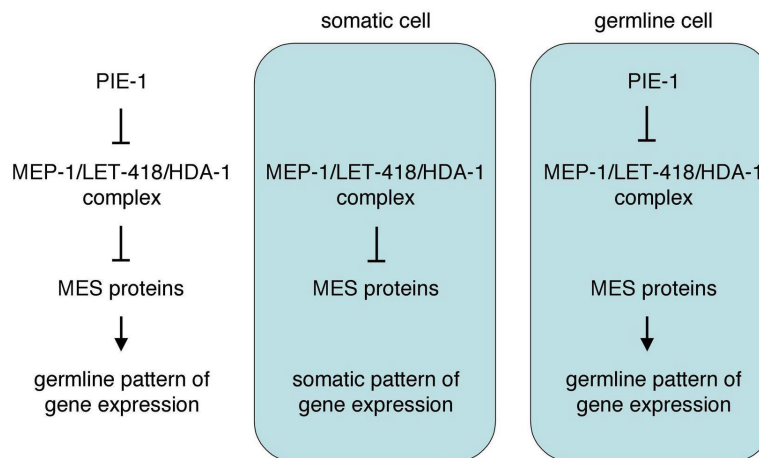


Figure 4. A model to explain the genetic interactions between MEP-1, PIE-1, and the MES proteins.

6. Summary and future directions

Germline specification appears to involve: establishment of a particular chromatin state in the parental germ line and transmission of that state to the early embryo (via the MES system); preservation of that state specifically in the germline blastomeres (via PIE-1 inhibition of MEP-1); transcriptional repression in the germline blastomeres (via PIE-1); and regulation of RNA metabolism in the primordial germ cells (via PIE-1 and P granules). An exciting frontier for investigation is figuring out the epigenetic components of this regulation: what "chromatin states" are established by the MES proteins, which genes or chromosomal domains are regulated in this way, and whether and

how the **MEP-1/LET-418/HDA-1** complex "remodels" chromatin. **PIE-1** is clearly a major germline player, with nuclear functions that include blocking transcriptional elongation and perhaps inhibiting **MEP-1/LET-418/HDA-1**, and cytoplasmic functions that include regulation of mRNA stability and expression (Tenenhaus et al., 2001). One mRNA target of **PIE-1** is *nos-2* RNA, whose function promotes incorporation of **Z2** and **Z3** into the somatic gonad (Subramaniam and Seydoux, 1999; see **Translational control of maternal RNAs**). Elucidating **PIE-1**'s various functions and their relationships to one another is a high priority. Finally, P granules, although known to exist for over 20 years, remain relatively mysterious. Learning which mRNAs they regulate and whether regulation is at the level of delivery, stability, processing, translation, or degradation will significantly advance our understanding of these unique germline organelles.

7. References

- Amiri, A., Keiper, B.D., Kawasaki, I., Fan, Y., Kohara, Y., Rhoads, R.E., and Strome, S. (2001). An isoform of eIF4E is a component of germ granules and is required for spermatogenesis in *C. elegans*. *Development* 128, 3899–3912. [Abstract](#)
- Barbee, S.A., Lublin, A.L., and Evans, T.C. (2002). A novel function for the Sm proteins in germ granule localization during *C. elegans* embryogenesis. *Curr. Biol.* 12, 1502–1506. [Abstract Article](#)
- Batchelder, C., Dunn, M.A., Choy, B., Suh, Y., Cassie, C., Shim, E.Y., Shin, T.H., Mello, C., Seydoux, G., and Blackwell, T.K. (1999). Transcriptional repression by the *Caenorhabditis elegans* germ-line protein PIE-1. *Genes Dev.* 13, 202–212. [Abstract](#)
- Belfiore, M., Mathies, L.D., Pugnale, P., Moulder, G., Barstead, R., Kimble, J., and Puoti, A. (2002). The MEP-1 zinc-finger protein acts with MOG DEAH box proteins to control gene expression via the *fem-3* 3' untranslated region in *Caenorhabditis elegans*. *RNA* 8, 725–739. [Abstract Article](#)
- Bender, L.B., Cao, R., Zhang, Y., and Strome, S. (2004). The MES-2/MES-3/MES-6 complex and regulation of histone H3 methylation in *C. elegans*. *Curr. Biol.* 14, 1639–1643. [Abstract Article](#)
- Bowerman, B., Draper, B.W., Mello, C.C., and Priess, J.R. (1993). The maternal gene *skn-1* encodes a protein that is distributed unequally in early *C. elegans* embryos. *Cell* 74, 443–452. [Abstract Article](#)
- Bowerman, B., Eaton, B.A., and Priess, J.R. (1992). *skn-1*, a maternally expressed gene required to specify the fate of ventral blastomeres in the early *C. elegans* embryo. *Cell* 68, 1061–1075. [Abstract Article](#)
- Cao, R., and Zhang, Y. (2004). The functions of E(Z)/EZH2-mediated methylation of lysine 27 in histone H3. *Curr. Opin. Genet. Dev.* 14, 155–164. [Abstract](#)
- Capowski, E.E., Martin, P., Garvin, C., and Strome, S. (1991). Identification of grandchildless loci whose products are required for normal germ-line development in the nematode *Caenorhabditis elegans*. *Genetics* 129, 1061–1072. [Abstract](#)
- Cheeks, R.J., Canman, J.C., Gabriel, W.N., Meyer, N., Strome, S., and Goldstein, B. (2004). *C. elegans* PAR proteins function by mobilizing and stabilizing asymmetrically localized protein complexes. *Curr. Biol.* 14, 851–862. [Abstract Article](#)
- DeRenzo, C., Reese, K.J., and Seydoux, G. (2003). Exclusion of germ plasm proteins from somatic lineages by cullin-dependent degradation. *Nature* 424, 685–689. [Abstract Article](#)
- Draper, B.W., Mello, C.C., Bowerman, B., Hardin, J., and Priess, J.R. (1996). MEX-3 is a KH domain protein that regulates blastomere identity in early *C. elegans* embryos. *Cell* 87, 205–216. [Abstract](#)
- Eckmann, C.R., Kraemer, B., Wickens, M., and Kimble, J. (2002). GLD-3, a bicaudal-C homolog that inhibits FBF to control germline sex determination in *C. elegans*. *Dev. Cell* 3, 697–710. [Abstract Article](#)
- Fong, Y., Bender, L., Wang, W., and Strome, S. (2002). Regulation of the different chromatin states of autosomes and X chromosomes in the germ line of *C. elegans*. *Science* 296, 2235–2238. [Abstract Article](#)

- Garvin, C., Holdeman, R., and Strome, S. (1998). The phenotype of *mes-2*, *mes-3*, *mes-4* and *mes-6*, maternal-effect genes required for survival of the germline in *Caenorhabditis elegans*, is sensitive to chromosome dosage. *Genetics* *148*, 167–185. [Abstract](#)
- Gruidl, M.E., Smith, P.A., Kuznicki, K.A., McCrone, J.S., Kirchner, J., Roussell, D.L., Strome, S., and Bennett, K.L. (1996). Multiple potential germ-line helicases are components of the germ-line-specific P granules of *Caenorhabditis elegans*. *Proc. Natl. Acad. Sci. U.S.A.* *93*, 13837–13842. [Abstract Article](#)
- Guedes, S., and Priess, J.R. (1997). The *C. elegans* MEX-1 protein is present in germline blastomeres and is a P granule component. *Development* *124*, 731–739. [Abstract](#)
- Hird, S.N., Paulsen, J.E., and Strome, S. (1996). Segregation of germ granules in living *Caenorhabditis elegans* embryos: cell-type-specific mechanisms for cytoplasmic localisation. *Development* *122*, 1303–1312.
- Holdeman, R., Nehrt, S., and Strome, S. (1998). MES-2, a maternal protein essential for viability of the germline in *Caenorhabditis elegans*, is homologous to a *Drosophila* Polycomb group protein. *Development* *125*, 2457–2467. [Abstract](#)
- Jones, A.R., Francis, R., and Schedl, T. (1996). GLD-1, a cytoplasmic protein essential for oocyte differentiation, shows stage- and sex-specific expression during *Caenorhabditis elegans* germline development. *Dev. Biol.* *180*, 165–183. [Abstract Article](#)
- Kawasaki, I., Amiri, A., Fan, Y., Meyer, N., Dunkelbarger, S., Motohashi, T., Karashima, T., Bossinger, O., and Strome, S. (2004). The PGL family proteins associate with germ granules and function redundantly in *Caenorhabditis elegans* germline development. *Genetics* *167*, 645–661. [Abstract Article](#)
- Kawasaki, I., Shim, Y.H., Kirchner, J., Kaminker, J., Wood, W.B., and Strome, S. (1998). PGL-1, a predicted RNA-binding component of germ granules, is essential for fertility in *C. elegans*. *Cell* *94*, 635–645. [Abstract Article](#)
- Korf, I., Fan, Y., and Strome, S. (1998). The Polycomb group in *Caenorhabditis elegans* and maternal control of germline development. *Development* *125*, 2469–2478. [Abstract](#)
- Kuznicki, K.A., Smith, P.A., Leung-Chiu, W.M., Estevez, A.O., Scott, H.C., and Bennett, K.L. (2000). Combinatorial RNA interference indicates GLH-4 can compensate for GLH-1; these two P granule components are critical for fertility in *C. elegans*. *Development* *127*, 2907–2916. [Abstract](#)
- Lin, R. (2003). A gain-of-function mutation in *oma-1*, a *C. elegans* gene required for oocyte maturation, results in delayed degradation of maternal proteins and embryonic lethality. *Dev. Biol.* *258*, 226–239. [Abstract Article](#)
- Mello, C.C., Draper, B.W., Krause, M., Weintraub, H., and Priess, J.R. (1992). The *pie-1* and *mex-1* genes and maternal control of blastomere identity in early *C. elegans* embryos. *Cell* *70*, 163–176. [Abstract Article](#)
- Mello, C.C., Schubert, C., Draper, B., Zhang, W., Lobel, R., and Priess, J.R. (1996). The PIE-1 protein and germline specification in *C. elegans* embryos. *Nature* *382*, 710–712. [Abstract Article](#)
- Navarro, R.E., Shim, E.Y., Kohara, Y., Singson, A., and Blackwell, T.K. (2001). *cgh-1*, a conserved predicted RNA helicase required for gametogenesis and protection from physiological germline apoptosis in *C. elegans*. *Development* *128*, 3221–3232. [Abstract](#)
- Ogura, K., Kishimoto, N., Mitani, S., K. Gengyo-Ando, and Kohara, Y. (2003). Translational control of maternal *glp-1* mRNA by POS-1 and its interacting protein SPN-4 in *Caenorhabditis elegans*. *Development* *130*, 2495–2503. [Abstract Article](#)
- Paulsen, J.E., Capowski, E.E., and Strome, S. (1995). Phenotypic and molecular analysis of *mes-3*, a maternal-effect gene required for proliferation and viability of the germ line in *C. elegans*. *Genetics* *141*, 1383–1398. [Abstract](#)
- Pitt, J.N., Schisa, J.A., and Priess, J.R. (2000). P granules in the germ cells of *Caenorhabditis elegans* adults are associated with clusters of nuclear pores and contain RNA. *Dev. Biol.* *219*, 315–233. [Abstract Article](#)

Reese, K.J., Dunn, M.A., Waddle, J.A., and Seydoux, G. (2000). Asymmetric segregation of PIE-1 in *C. elegans* is mediated by two complementary mechanisms that act through separate PIE-1 protein domains. *Mol. Cell* 6, 445–455. [Abstract Article](#)

Ross, J.M., and Zarkower, D. (2003). Polycomb group regulation of Hox gene expression in *C. elegans*. *Dev. Cell* 4, 891–901. [Abstract Article](#)

Saffman, E.E., and Lasko, P. (1999). Germline development in vertebrates and invertebrates. *Cell. Mol. Life Sci.* 55, 1141–1163. [Abstract](#)

Schisa, J.A., Pitt, J.N., and Priess, J.R. (2001). Analysis of RNA associated with P granules in germ cells of *C. elegans* adults. *Development* 128, 1287–1298. [Abstract](#)

Seydoux, G., and Dunn, M.A. (1997). Transcriptionally repressed germ cells lack a subpopulation of phosphorylated RNA polymerase II in early embryos of *Caenorhabditis elegans* and *Drosophila melanogaster*. *Development* 124, 2191–2201. [Abstract](#)

Seydoux, G., and Fire, A. (1994). Soma-germline asymmetry in the distributions of embryonic RNAs in *Caenorhabditis elegans*. *Development* 120, 2823–2834. [Abstract](#)

Seydoux, G., Mello, C.C., Pettitt, J., Wood, W.B., Priess, J.R., and Fire, A. (1996). Repression of gene expression in the embryonic germ lineage of *C. elegans*. *Nature* 382, 713–716. [Abstract Article](#)

Shimada, M., Kawahara, H., and Doi, H. (2002). Novel family of CCCH-type zinc-finger proteins, MOE-1, -2 and -3, participates in *C. elegans* oocyte maturation. *Genes Cells* 7, 933–947. [Abstract Article](#)

Shin, T.H., and Mello, C.C. (2003). Chromatin regulation during *C. elegans* germline development. *Curr. Opin. Genet. Dev.* 13, 455–462. [Abstract Article](#)

Subramaniam, K., and Seydoux, G. (1999). *nos-1* and *nos-2*, two genes related to *Drosophila nanos*, regulate primordial germ cell development and survival in *Caenorhabditis elegans*. *Development* 126, 4861–4871. [Abstract](#)

Tabara, H., Hill, R.J., Mello, C.C., Priess, J.R., and Kohara, Y. (1999). *pos-1* encodes a cytoplasmic zinc-finger protein essential for germline specification in *C. elegans*. *Development* 126, 1–11. [Abstract](#)

Tenenhaus, C., Subramaniam, K., Dunn, M.A., and Seydoux, G. (2001). PIE-1 is a bifunctional protein that regulates maternal and zygotic gene expression in the embryonic germ line of *Caenorhabditis elegans*. *Genes Dev.* 15, 1031–1040. [Abstract Article](#)

Unhavaithaya, Y., Shin, T.H., Miliaras, N., Lee, J., Oyama, T., and Mello, C.C. (2002). MEP-1 and a homolog of the NURD complex component Mi-2 act together to maintain germline-soma distinctions in *C. elegans*. *Cell* 111, 991–1002. [Abstract Article](#)

Wang, L., Eckmann, C.R., Kadyk, L.C., Wickens, M., and Kimble, J. (2002). A regulatory cytoplasmic poly(A) polymerase in *Caenorhabditis elegans*. *Nature* 419, 312–316. [Abstract Article](#)

Xu, L., Fong, Y., and Strome, S. (2001a). The *Caenorhabditis elegans* maternal-effect sterile proteins, MES-2, MES-3, and MES-6, are associated in a complex in embryos. *Proc. Natl. Acad. Sci. U.S.A.* 98, 5061–5066. [Abstract Article](#)

Xu, L., Paulsen, J., Yoo, Y., Goodwin, E.B., and Strome, S. (2001b). *Caenorhabditis elegans* MES-3 is a target of GLD-1 and functions epigenetically in germline development. *Genetics* 159, 1007–1017. [Abstract](#)

Zhang, F., Barboric, M., Blackwell, T.K., and Peterlin, B.M. (2003). A model of repression: CTD analogs and PIE-1 inhibit transcriptional elongation by P-TEFb. *Genes Dev.* 17, 748–758. [Abstract Article](#)



All WormBook content, except where otherwise noted, is licensed under a [Creative Commons Attribution License](#).